

# Parkheath

*Sold on Service*

---

**Howitt Road NW3**

**£3,100 PCM (£715 per week) - Camden Band F**



Delightful 2 double bedroom garden flat  
Level ground floor in period conversion  
Modern kitchen/diner  
Family bathroom  
Moments to Belsize Park underground station

Private patio garden  
Large reception with garden access  
Main bedroom with en suite shower room  
Lower ground floor playroom/study  
EPC: Rating C, Council Tax: Camden band F

Belsize Park Office 020 7431 3104

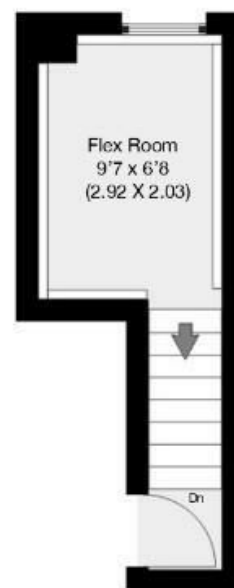


Howitt Road, London, NW6

Approximate Gross Internal Area 87.49 sqm / 941 sqft



Ground Floor



Basement

THIS FLOOR PLAN IS PRODUCED FOR PARKHEATH SUBMITTED BY ARCHIMEDIA web: [www.archi-media.co.uk](http://www.archi-media.co.uk)

Whilst every attempt has been made to ensure the accuracy of the floor plan contained here, measurements of doors, windows and rooms are approximate and no responsibility is taken for any error, omission or misstatement. These plans are for representation purposes only and should be used as such by any prospective buyer or lease. Specifically no guarantee is given on the gross internal floor area of the property if quoted on this plan and any figures given is initial guidance only and should be treated as such.

The particulars do not constitute part of an offer or contract. The particulars, including text, photographs and plans, are for the guidance only of prospective purchasers/tenants and must not be relied upon as statements of fact. The descriptions provided therein represent the opinion of the author and whilst given in good faith should not be construed as statements of fact. Nothing in these particulars shall be deemed a statement that the property is in good condition or otherwise or that any services or facilities are in good working order. All measurements are approximate